



CLIMAVER® A2 Deco

The pre-insulated ductwork system

CLIMAVER® is a self-supporting duct for air-conditioning, ventilation and heating systems. CLIMAVER® has been designed to offer excellent thermal performance and high level of airtightness making the system energy efficient. In one unique operation, the insulation is fully integrated to the duct system saving both installation time and cost on job-site.

CLIMAVER® A2 Deco, thanks to its decorative external facing, offers good aesthetics especially when installation are visible. It also drastically improves noise levels generated by fans and air-conditioning units providing acoustic comfort to the building occupants. CLIMAVER® A2 Deco offers an excellent fire protection.



Aesthetics

Decorative solution when the ductwork is visible;
Available in a wide range of colors.



Noise attenuation

Highest acoustic absorption.



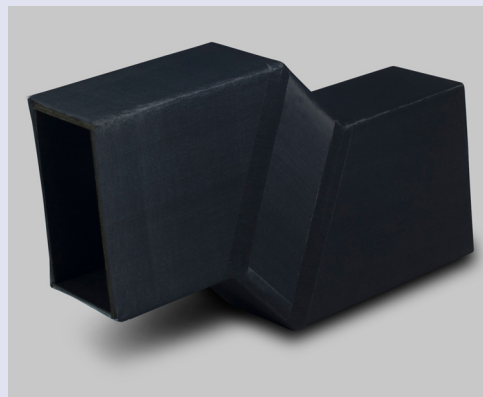
Fast installation

One single operation;
Straight Duct Method (SDM) for easy cutting;
Lightweight system.



Extra-high energy savings

Outstanding ductwork airtightness.



Sustainable system



Recycled material content
70 % of the product composition



Heat losses reduced thanks to outstanding duct work airtightness



ISOVER
SAINT-GOBAIN



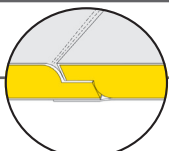
The pre-insulated ductwork system



Characteristic	Symbol	Unit	Quantities and measured values					Standard		
Application field	-	-	CLIMAVER® is a self-supporting duct for air-conditioning, ventilation and heating systems. CLIMAVER® has been designed to offer excellent thermal performance, acoustics and high level of airtightness making the system energy efficient.					EN 13403		
Thermal conductivity	T	[°C]	10	20	40	60		EN 12667 EN 12939		
	λ	[W/(m·K)]	0.032	0.033	0.036	0.038				
Fire behaviour	-	-	Non-combustible, Euroclass A2-s1, d0					EN 13501-1 EN 15715		
Acoustic absorption		Hz	125	250	500	1000	2000	4000	EN ISO 354 EN ISO 11654	
	α		0.35	0.65	0.75	0.85	0.90	0.90		
	Section [mm]	200 x 200		4.8	11.5	14.0	16.7	18.1		18.1
		400 x 500		2.2	5.2	6.3	7.5	8.2		8.2
	500 x 1000		1.5	3.5	4.2	5.0	5.4	5.4		
	α _w		0.85							
Water vapour resistance	-	m ² ·h·Pa/mg	140					EN 12086		
Airtightness	-	-	Class D					EN 1507 EN 12237		
Resistance to pressure	-	Pa	800					EN 13403		
Dimensional stability	-	%	Quantities and measured values : < 1					EN 1604		
CE marking	-	-	CE marking designation code MW-EN14303-T5-MV1					EN 14303		
Quality management	-	-	ISOVER is certified according to EN ISO 9001 and EN ISO 14001					EN ISO 9001 EN ISO 14001		

Delivery form: Standard dimensions / packaging information					
Dimensions		Thickness d [mm]	m ² /pack	m ² /pallet	m ² /truck
Lenght l [mm]	Width b [mm]				
3000	1190	25	24.99	149.94	2399.00

Products must be stored inside, in a dry and clean location

Installation unique feature	Working conditions			
Duct assembly: exclusive male/female molded shiplap		Resistant to aggressive cleaning methods	Maximum air speed: 18 m/s	Maximum temperature of circulating air: 90°C

www.isover-technical-insulation.com

The technical information corresponds to our present state of knowledge and experience at the date of printing (see imprint). But no legal guarantee can be given, unless it has been explicitly agreed. The state of experience and knowledge is developing continuously. Please see to it that you always use the latest edition of this information. The described product applications do not take special circumstances in consideration. Please verify whether our products are appropriate for the concrete application. For further information please contact our ISOVER sales offices. We deliver only according to our terms of trade and terms of delivery.